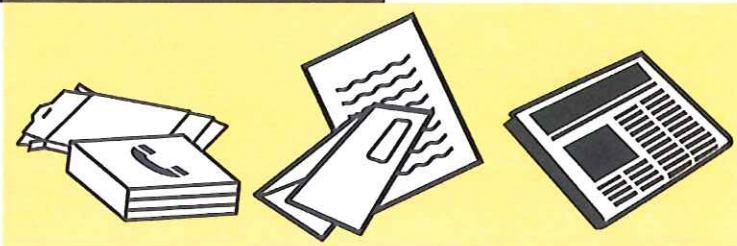


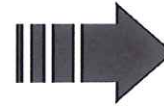


IN OFFICE RECYCLING BINS

Mixed Office Paper



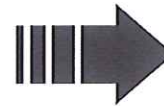
Printer Paper
Magazines
Envelopes
Newsprint



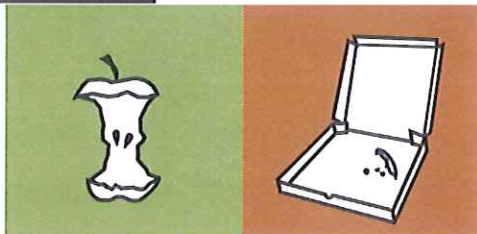
Mixed Clean Containers



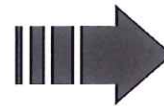
Plastics #1-7
Glass Jars
TetraPacks
Tin Cans



Food Scraps



Food Scraps
Paper Towels
Waxed Cardboard

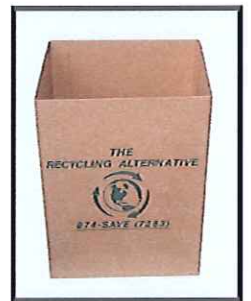
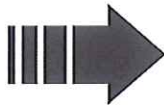


Soft Plastics



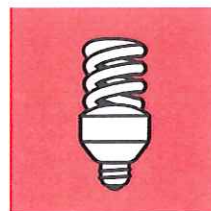
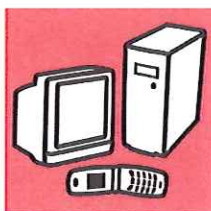
Soft Plastics
Grocery Bags

*Clean plastics only
*No food wrappers



SPECIALTY RECYCLING IN YOUR BUILDING

Electronics
Batteries
CFL/Light Bulbs
Fluorescent Tubes



Contact your building/property manager for more information.

Consumer batteries each weighing less than 5kg

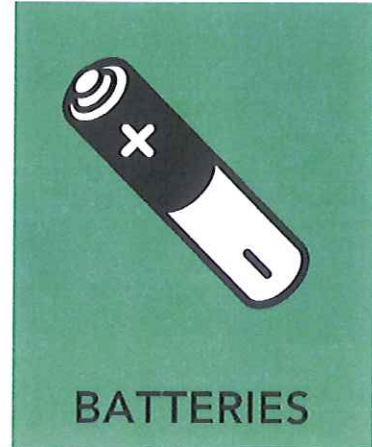
- Nickel Cadmium (Ni-Cd)
- Nickel Metal Hydride (Ni-MH)
- Lithium Ion (Li-Ion)
- Nickel Zinc (Ni-Zn)
- Small Sealed Lead Acid (SSLA/Pb)
- Lithium Primary
- Alkaline (AA, AAA, 9V, etc...)

Requires Bagging:

- Rechargeable batteries (Li-Ion, SSLA/Pb)
- Lithium Primary

Does Not Require Bagging:

- Alkaline
- Ni-MH



COMPLIANT ELECTRONICS

- Computer Towers (CPU)
- Desktop Servers
- Computer with Built-in Monitors
- Computer Monitors
- Keyboards & Mice
- Laptops
- VCR, DVD, Laser Disk and BETA Players
- Stereos Walkmen, Discmen & MP3 Players
- Desktop Printers & Combo-Printers
- Fax Machines & Photo Printers
- Label/Card Printers
- Televisions
- Combination TV/VCR
- Batteries
- Cell Phones, Pagers and Beepers
- External Routers and Modems
- Cameras & Multimedia Projectors
- Personal Organizers & Other Handheld Electronics
- Commercial, Industrial Printers & Receipt Printers



Recycling Alternative is an official collector of electronics waste under the ENCORP/ESABC Provincial Stewardship Program.